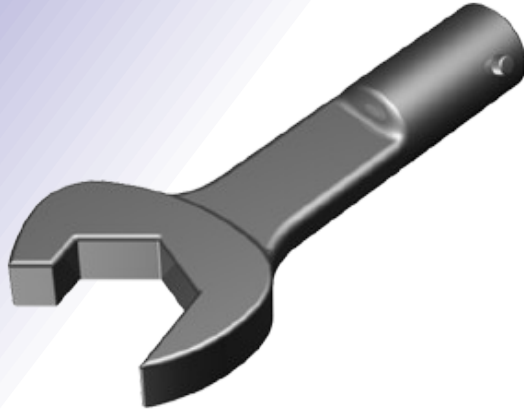


## OPEN END SPEEDER DRIVE ENDS



Part No.	Opening
RJS-6	3/8"
RJS-7	7/16"
RJS-8	1/2"
RJS-9	9/16"
RJS-10	5/8"
RJS-11	11/16"
RJS-12	3/4"
RJS-13	13/16"
RJS-14	7/8"
RJS-15	15/16"
RJS-16	1"
RJS-17	1-1/16"
RJS-18	1-1/8"
RJS-20	1-1/4"
RYS-12	3/4"
RYS-13	13/16"
RYS-14	7/8"
RYS-15	15/16"
RYS-16	1"
RYS-17	1-1/16"
RYS-18	1-1/8"
RYS-20	1-1/4"

Part No.	Opening
RJS-6M	6mm
RJS-7M	7mm
RJS-8M	8mm
RJS-9M	9mm
RJS-10M	10mm
RJS-11M	11mm
RJS-12M	12mm
RJS-13M	13mm
RJS-14M	14mm
RJS-15M	15mm
RJS-16M	16mm
RJS-17M	17mm
RJS-18M	18mm
RJS-19M	19mm
RJS-20M	20mm
RJS-21M	21mm
RJS-22M	22mm
RJS-23M	23mm
RJS-24M	24mm
RJS-25M	25mm
RJS-26M	26mm
RJS-27M	27mm
RJS-28M	28mm
RJS-30M	30mm
RJS-32M	32mm

Drive Series	Shank Size
VB-5T-I	J
VB-10T-I	J
VB-10ST-I	J
VB-10AT-I	J
VB-50ST-I	J
VB-50T-I	J
VB-100ST-I	Y
VB-100T-I	Y
VB-200T-I	Y
VB-300T-I	X
VB-600T-I	Z

In addition to the Standard Interchangeable Drive Ends (replaceable heads), we also make special configurations for "difficult to reach" operations. Our specials can be made to suit your requirements.

Most sizes not shown can be made. Please call for assistance and we will respond immediately.

Torque capacity of drive ends may be limited by square drive size and/or by opening sizes. Please check your requirements.