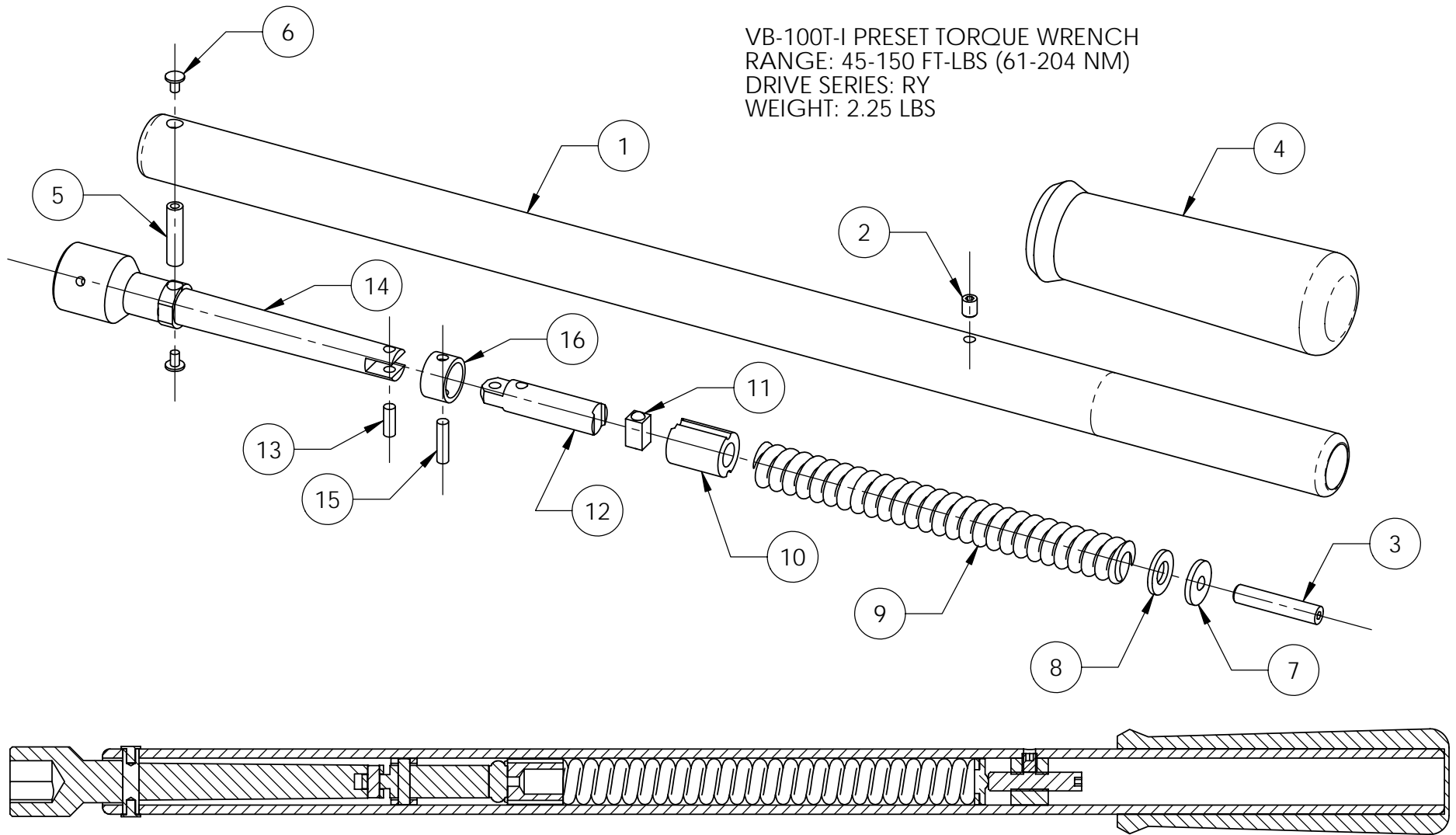


VB-100T-I PRESET TORQUE WRENCH
 RANGE: 45-150 FT-LBS (61-204 NM)
 DRIVE SERIES: RY
 WEIGHT: 2.25 LBS



SEE PAGE 2 FOR PART NUMBERS
 AND DESCRIPTIONS

ADJUSTMENT TOOL PART #: AT-3

PG. 1 OF 2



Van F. Belknap

Division: **Hank Thorn** Company, Inc.

29164 Wall Street / Wixom, Michigan 48393 / Phone: (248)348-7800 / Fax: (248)348-9821

SCALE: 1:2
 DATE: 10/20/2005

UNLESS OTHERWISE SPECIFIED:
 1. ALL DIMENSIONS ARE $\pm .005$
 2. BREAK ALL SHARP EDGES

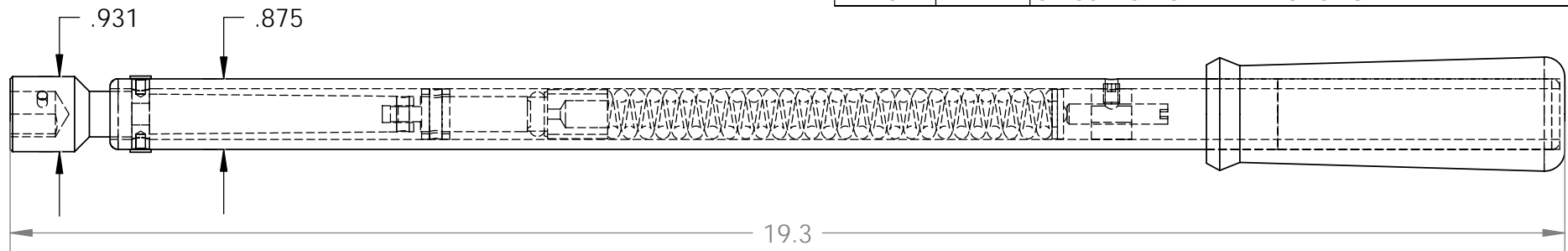
DRAWN BY: R.NORTH

APPROVED BY:
 DRAWING NUMBER:

VB-100T-I PRESET TORQUE WRENCH

VB-100T-I

ITEM	QTY	DESCRIPTION
1	1	30-500-47 - TUBE ASSEMBLY
2	1	10-101-34 - LOCKING SET SCREW
3	1	10-101-9 - ADJUSTING SET SCREW
4	1	30-277-5 - HAND GRIP
5	1	45-91 - PIVOT PIN
6	2	45-92 - PIVOT PIN RIVET
7	1	30-8 - THRUST WASHER
8	1	10-104-1 - FLAT WASHER
9	1	95-246 - TORQUE SPRING
10	1	45-251 - CAM
11	1	45-253-1 - PAWL
12	1	61-62 - SECONDARY CLICK ARM
13	1	45-250 - ROLLER PIN
14	1	30-38 - PRIMARY CLICK ARM
15	1	10-102-24 - PIN
16	1	61-60 - CLICK ARM FULCRUM



VB-100T-I PRESET TORQUE WRENCH
 RANGE: 45-150 FT-LBS (61-204 NM)
 DRIVE SERIES: RY
 WEIGHT: 2.25 LBS

PG. 2 OF 2

 Van F. Belknap Company, Inc.		Division: Hank Thorn Company, Inc.
		29164 Wall Street / Wixom, Michigan 48393 / Phone: (248)348-7800 / Fax: (248)348-9821
SCALE: 1:2	UNLESS OTHERWISE SPECIFIED: 1. ALL DIMENSIONS ARE $\pm .005$ 2. BREAK ALL SHARP EDGES	DRAWN BY: R.NORTH
DATE: 10/20/2005		APPROVED BY:
VB-100T-I PRESET TORQUE WRENCH		DRAWING NUMBER: VB-100T-I